

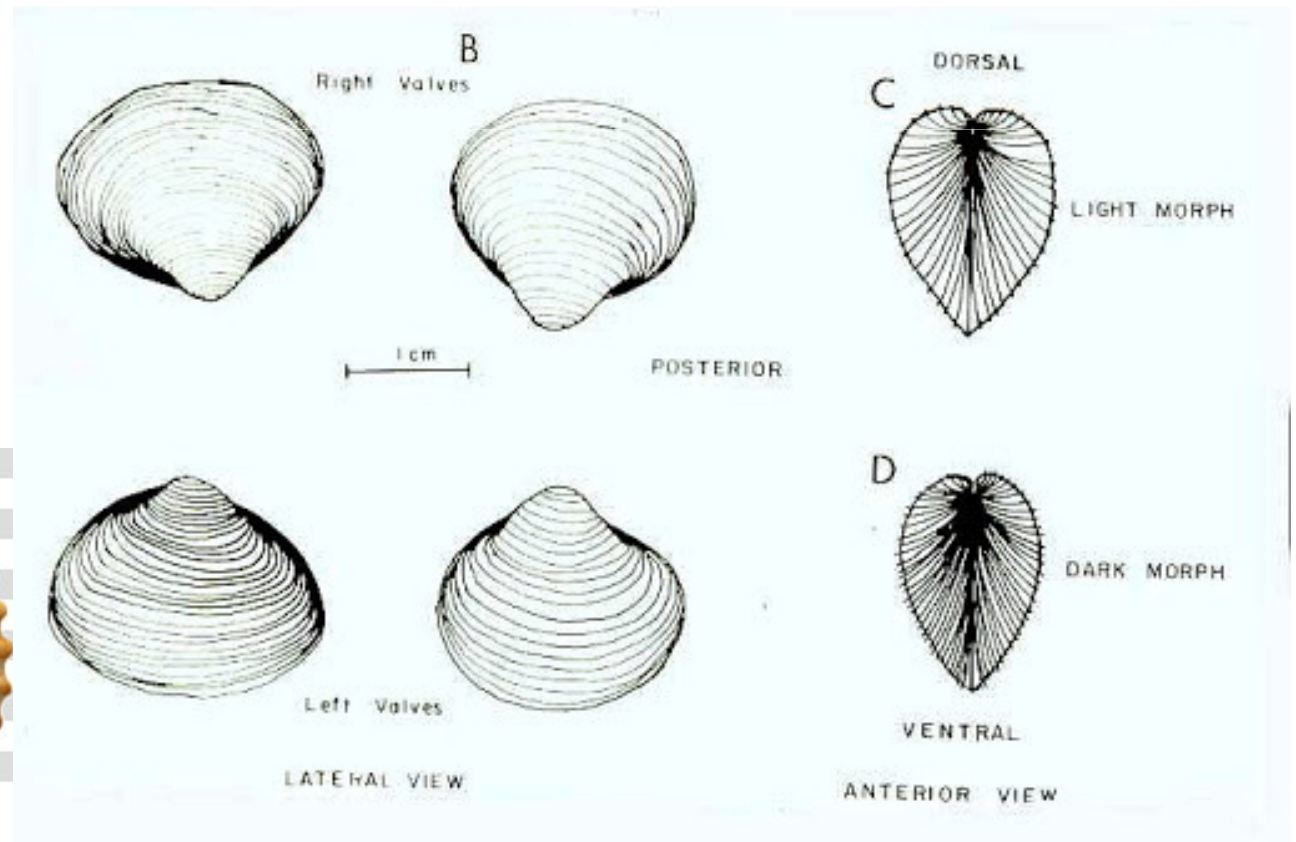
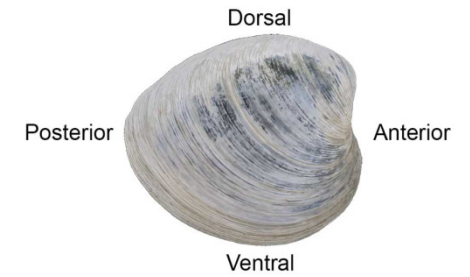
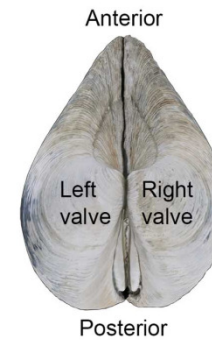
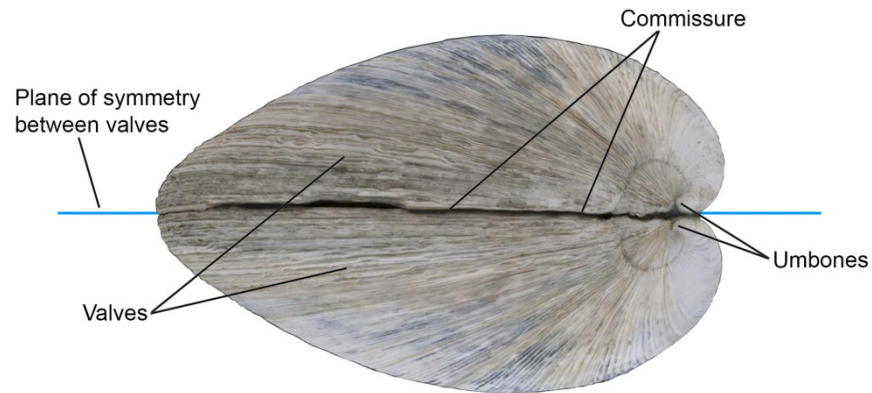


Pelecypoda/ Bivalve

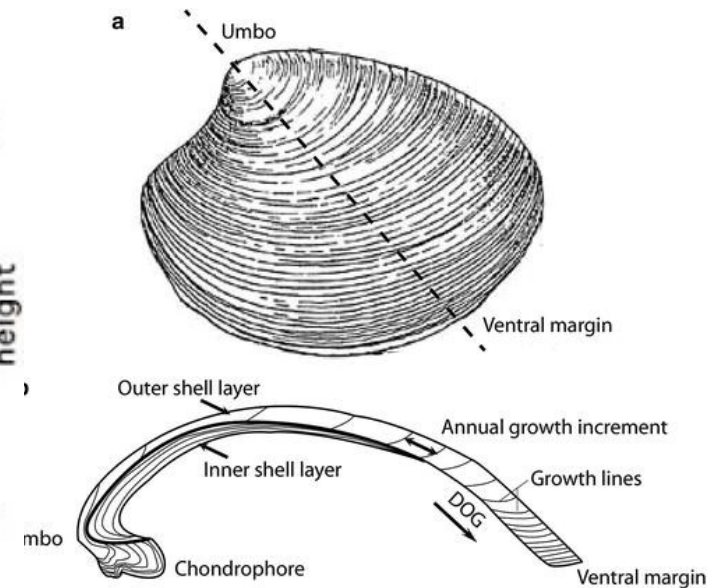
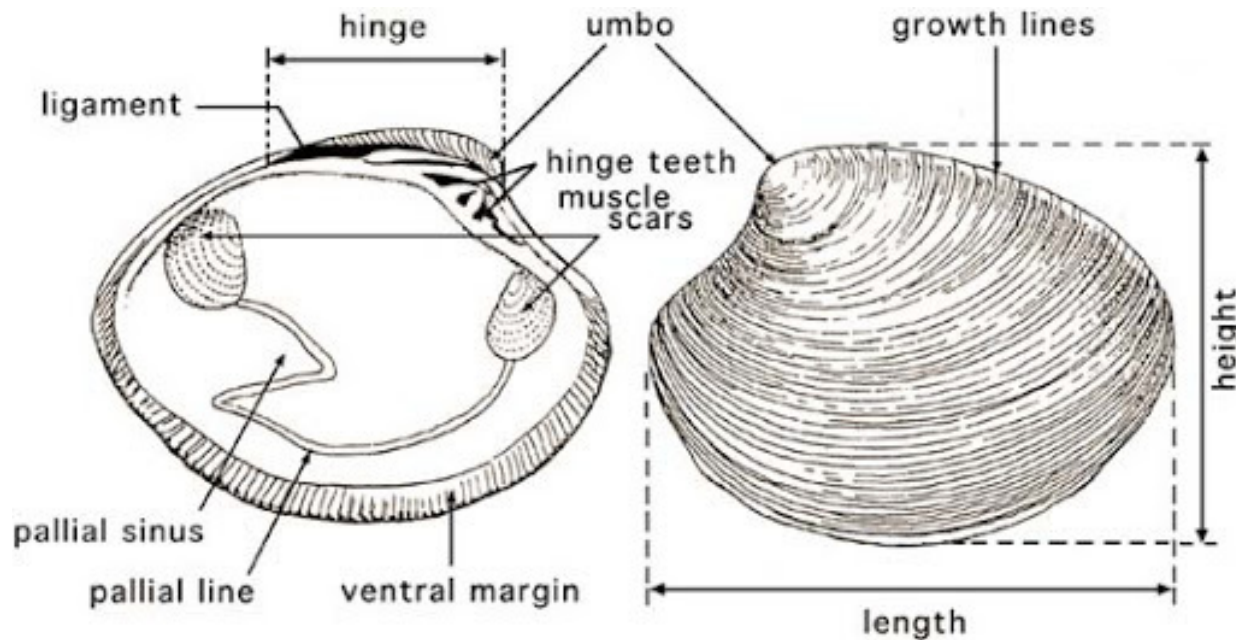
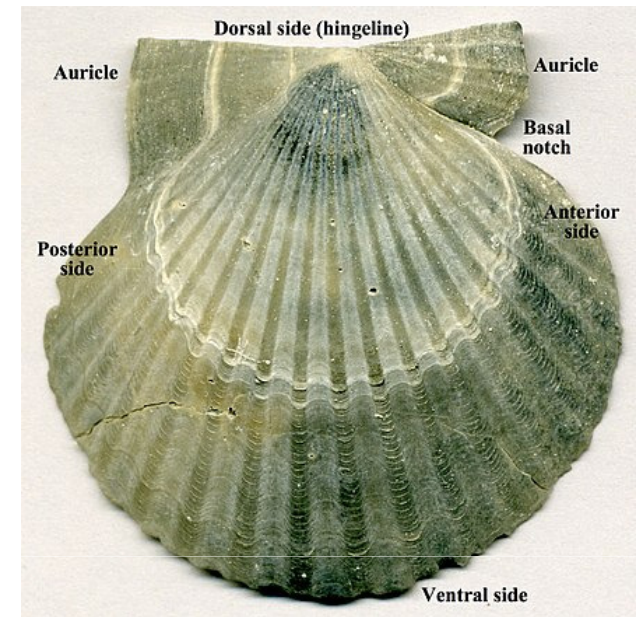
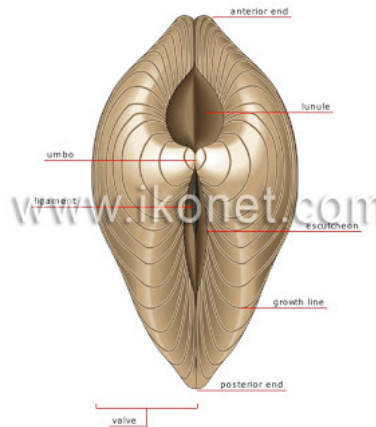
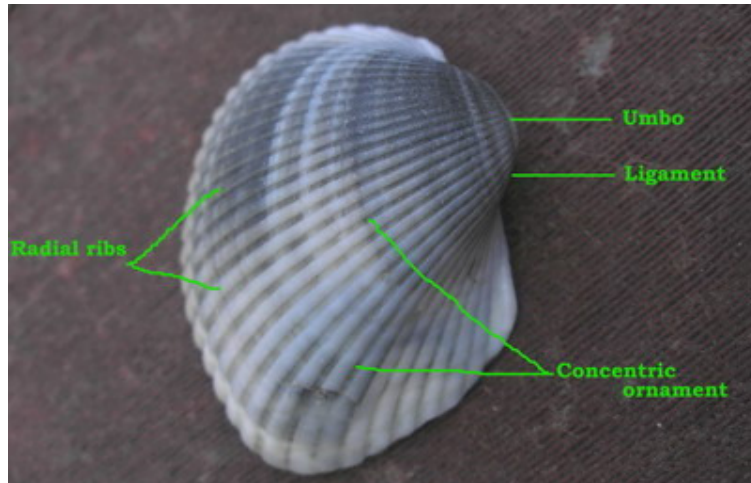
GE3

Dept. of Geology

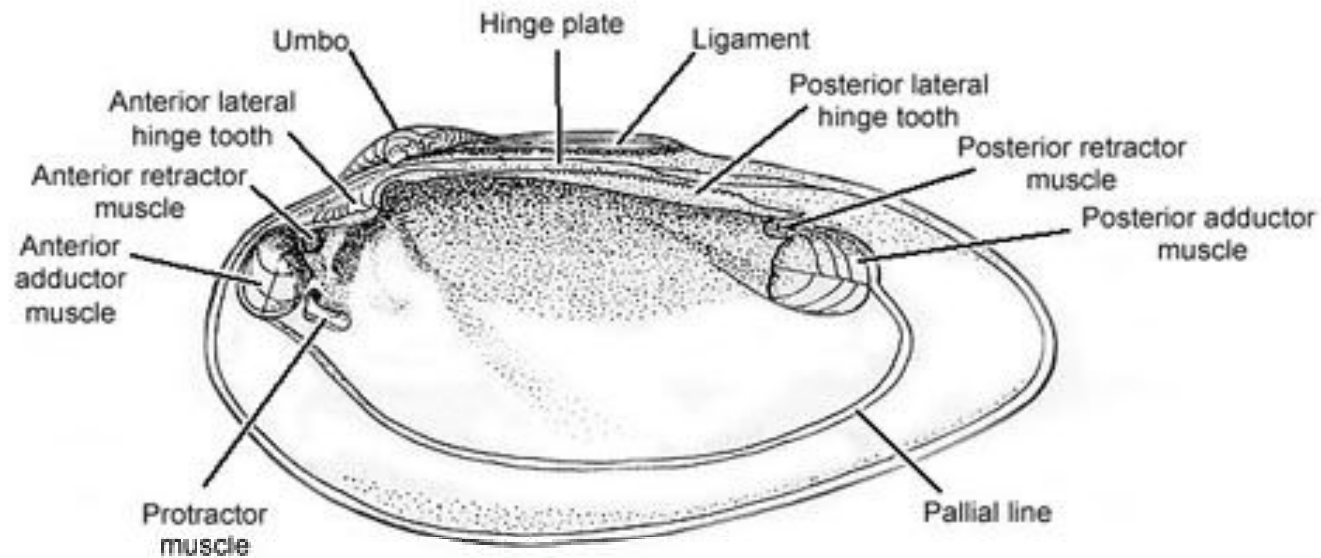
Morphology



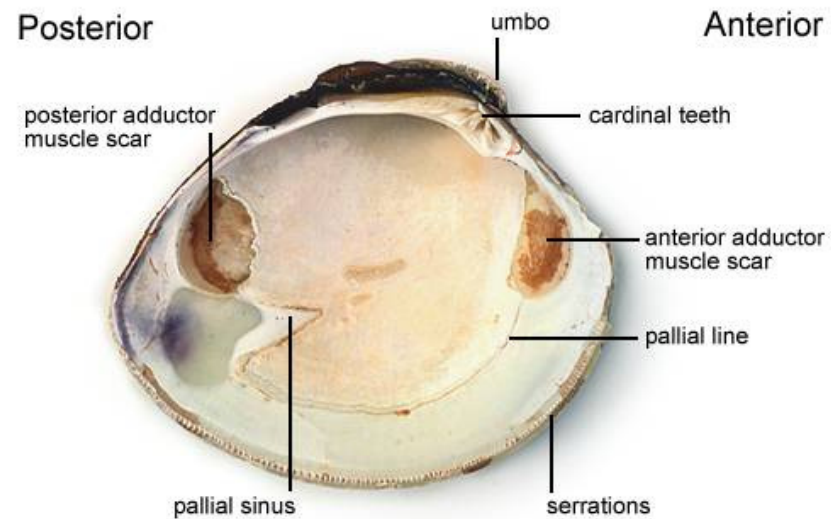
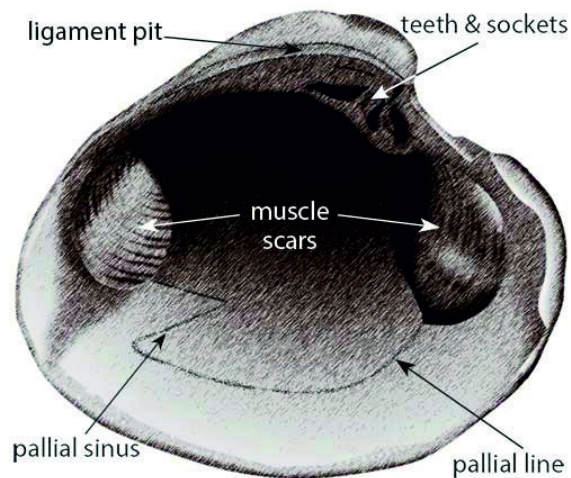
External Features



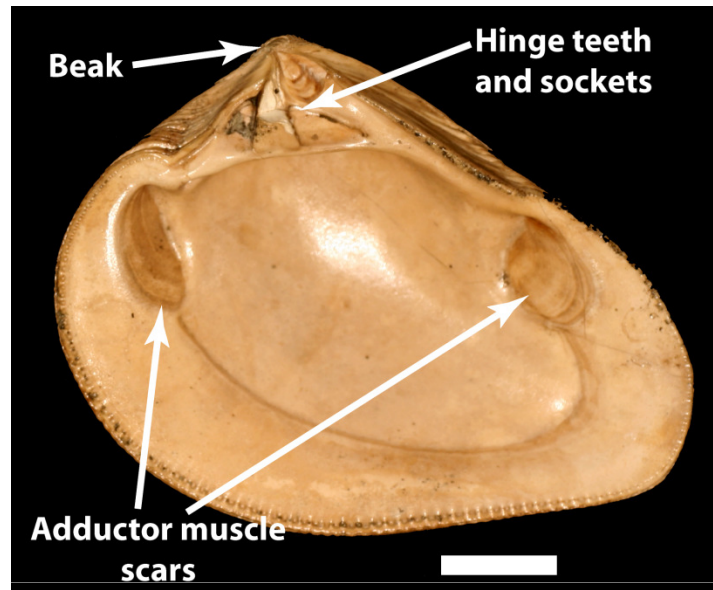
Internal Features



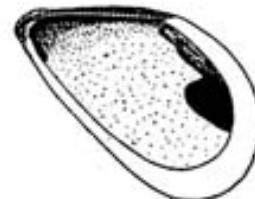
Clam - Inner Surface of the Left Valve



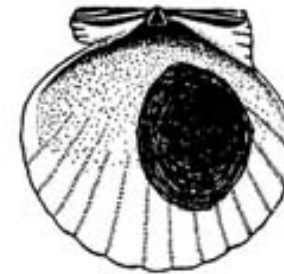
Teeth & Socket



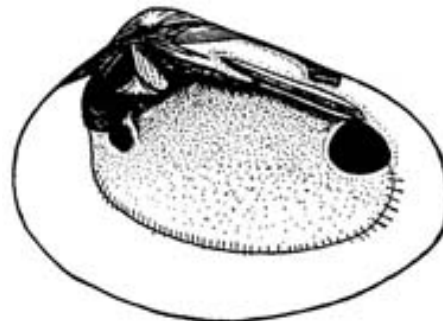
taxodont



dysodont



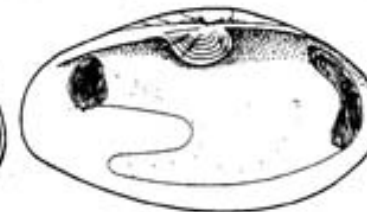
isodont



schizodont



heterodont



desmodont

(b)

Indian fossils



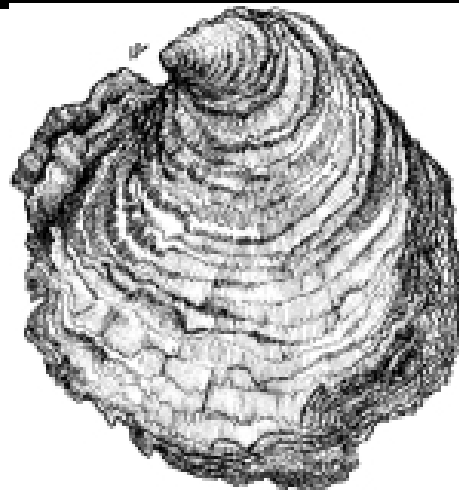
Unio



Pecten- Swimmer form



Ostrea- Cemented form



Arca- burrowing form



Thank You

