



# Brachiopoda

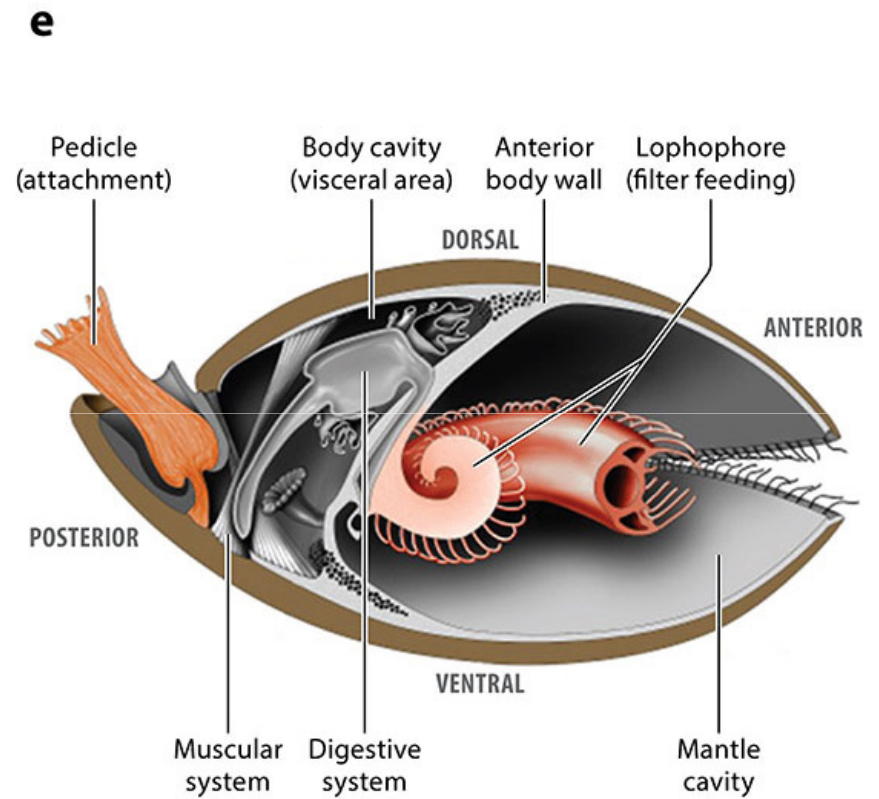
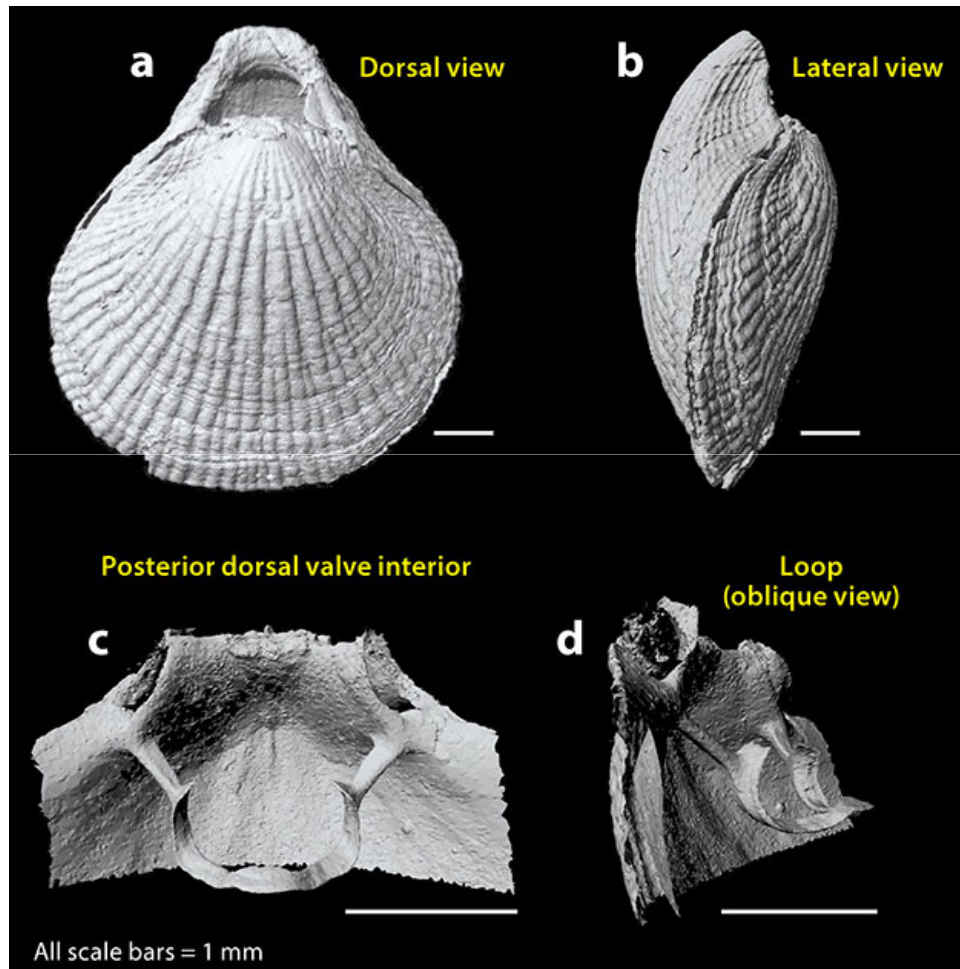
GE3

Dept. of Geology

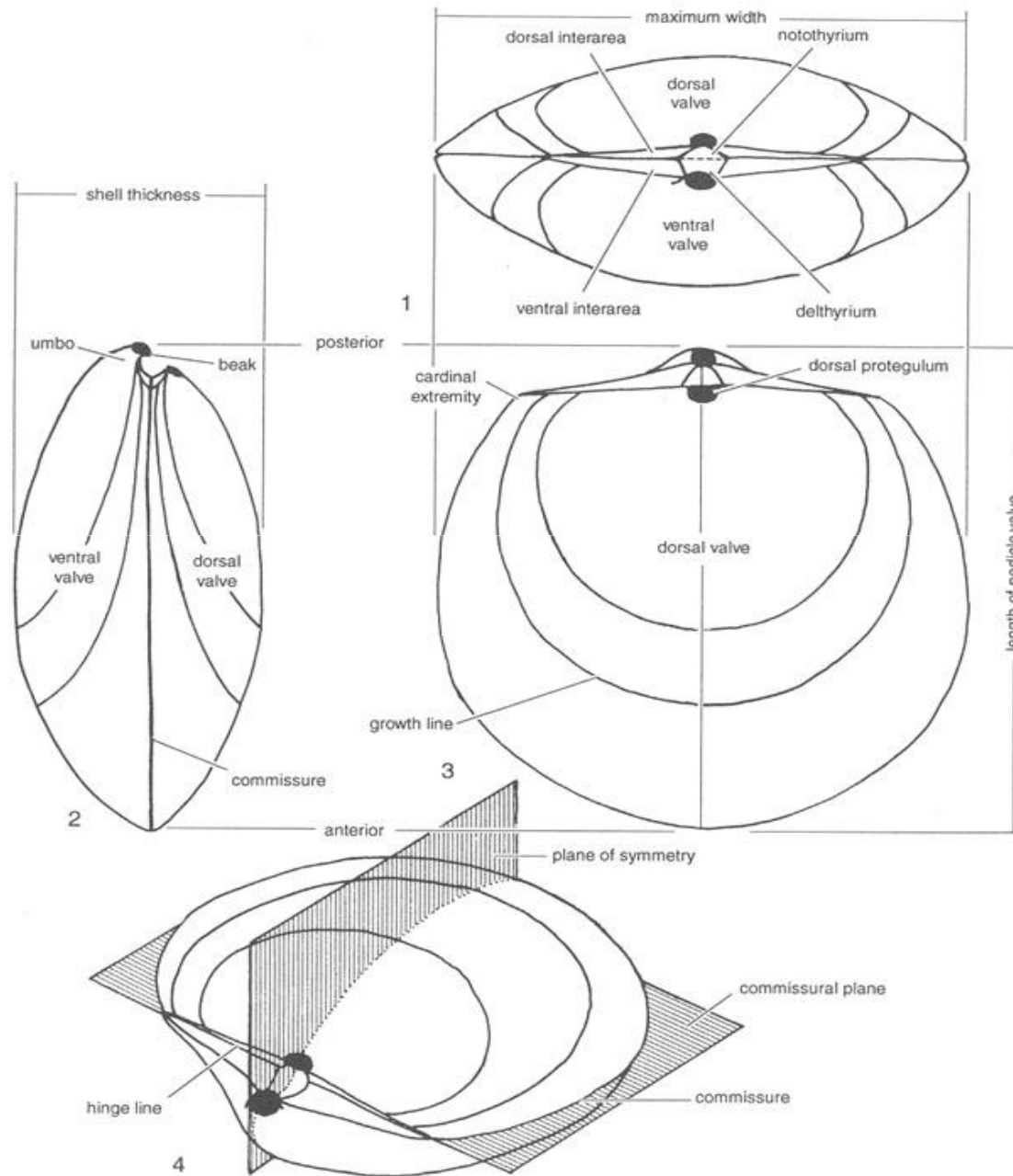
# Brachiopoda

- Phylum- brachiopoda
- Marine form.
- Sessile benthic in nature.
- Basically two types- i) Inarticulate (two valves joined by muscles) ii) articulate ( two valves joined by teeth and sockets).

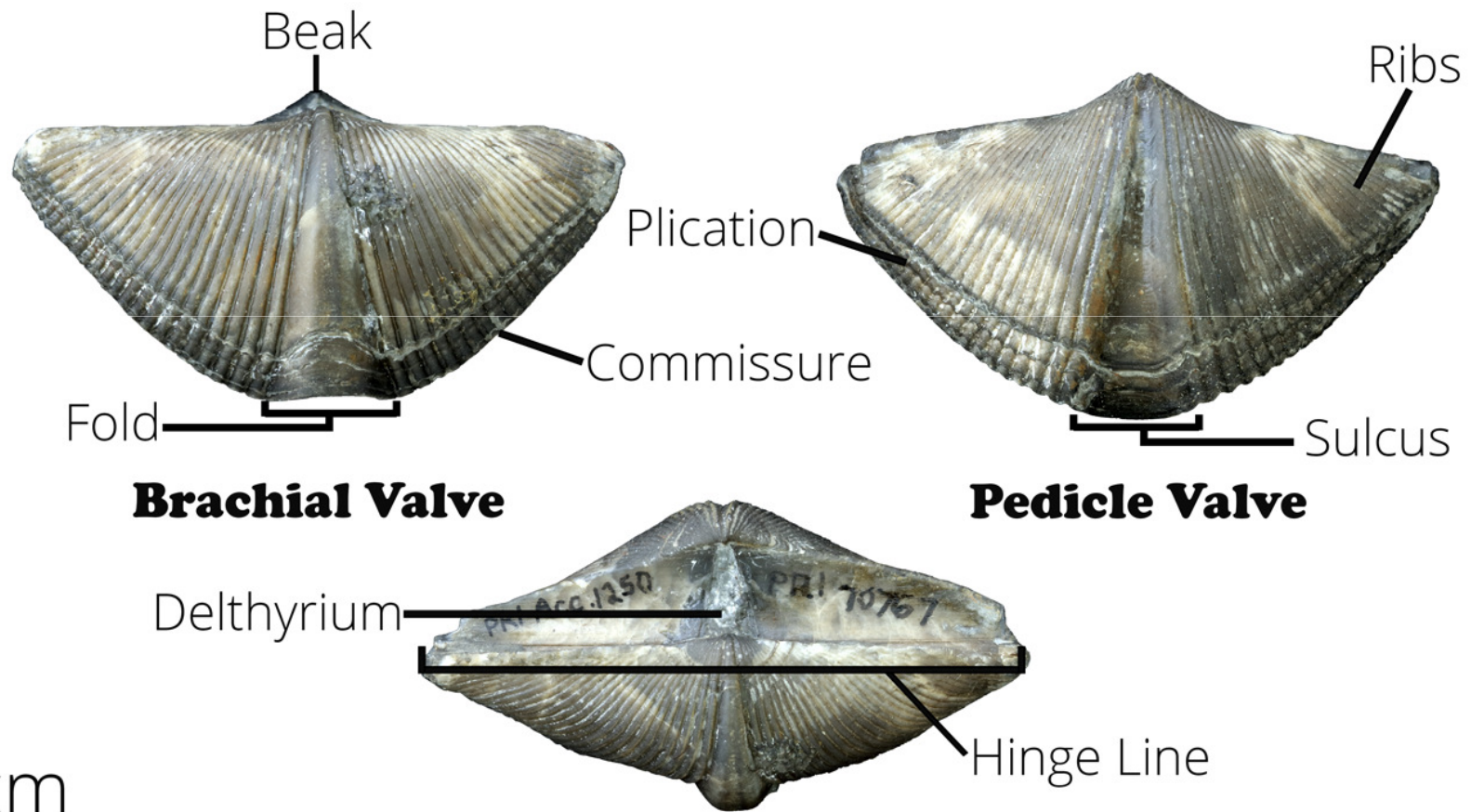




# Morphology



# Morphology





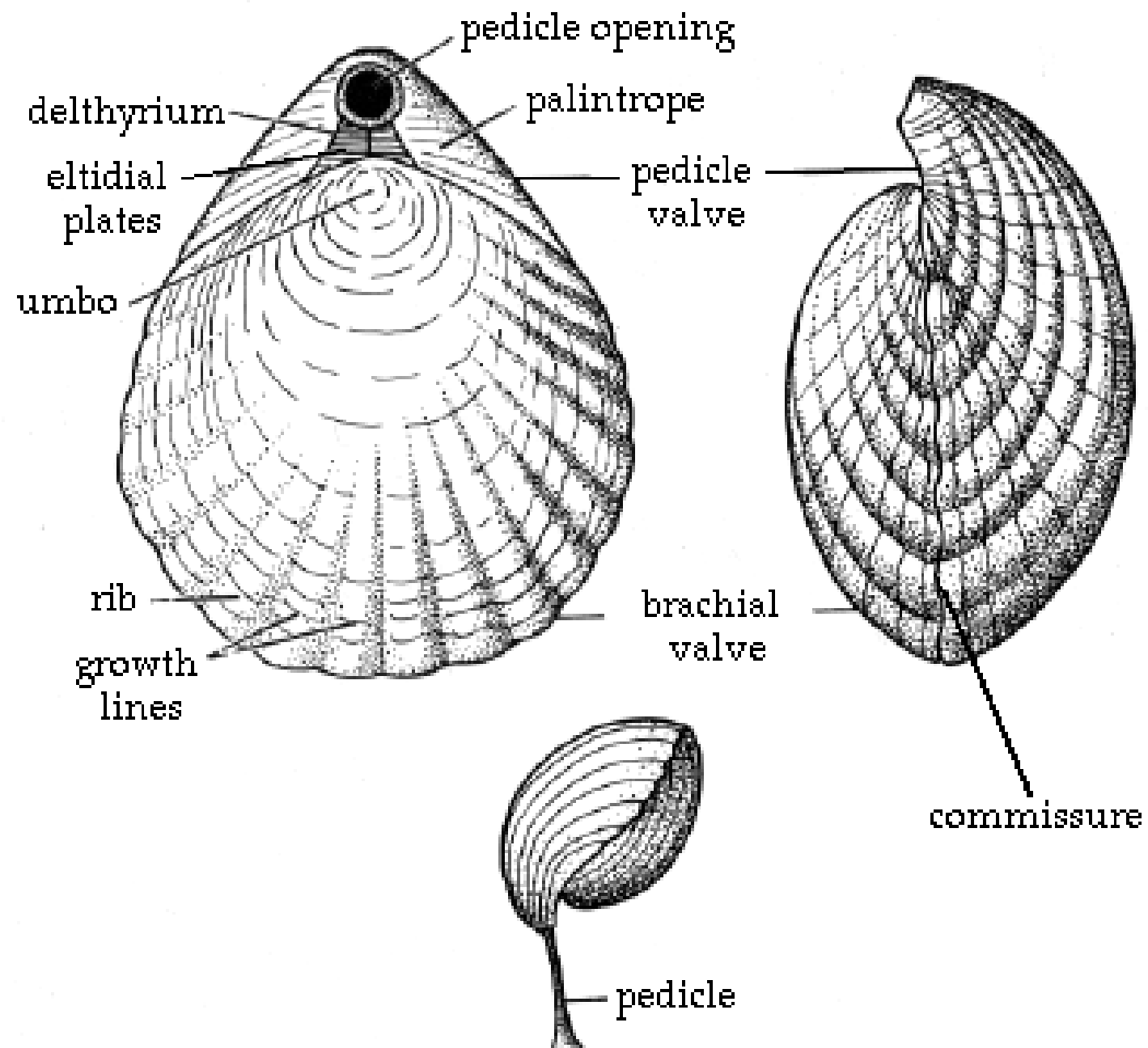
# Strophic & Non strophic shell



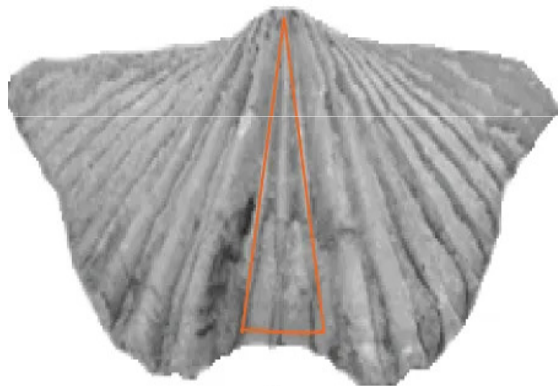
**Strophic**



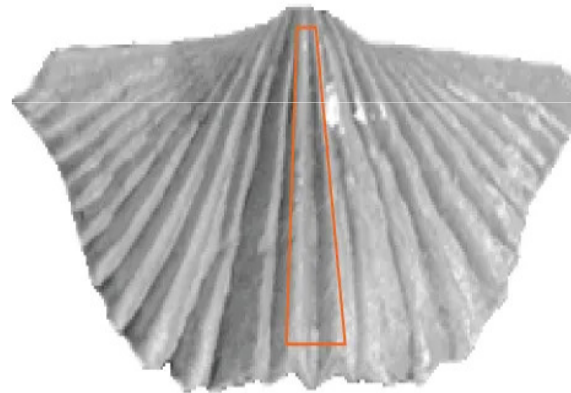
**Astrophic**



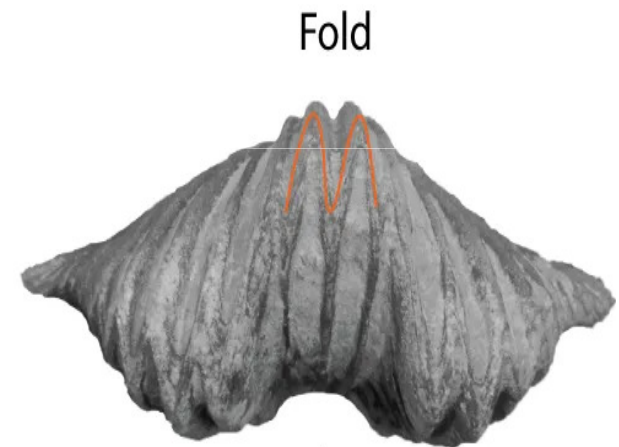
# Types of Anterior line of commissure



Sulcus



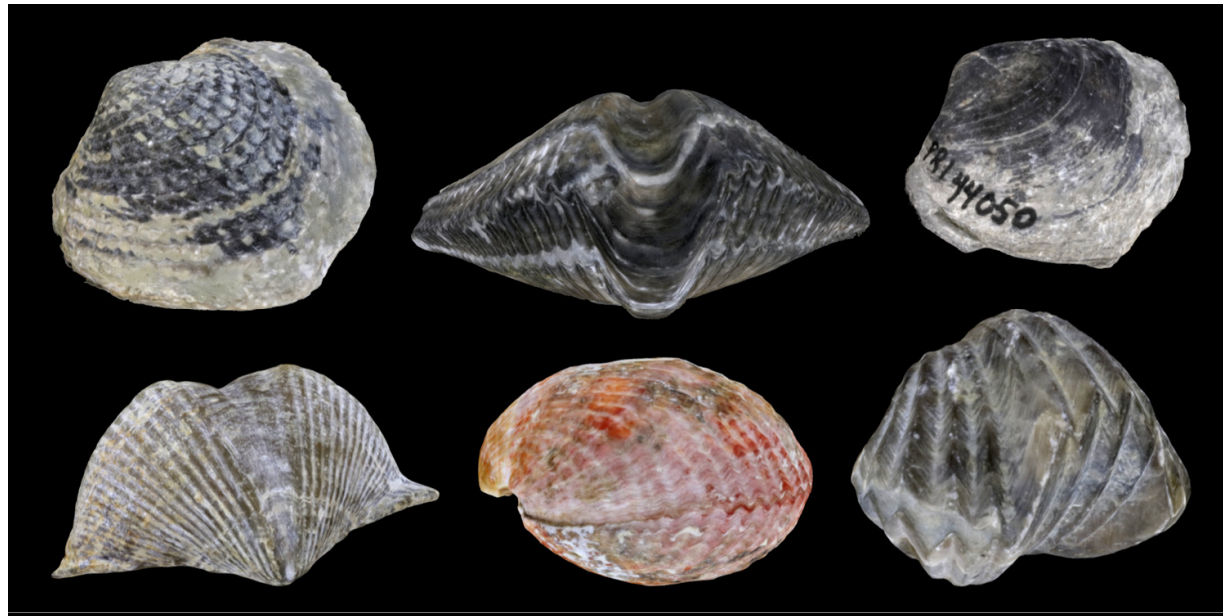
Fold



Sulcus

Fold





Indian fossils

# Spirifer



# Pentamerous



1 cm

# Syringothyris



# Marginifera





Thank you